

Fall
2017 Issue

AlumniTimes

Clarkson College Alumni Magazine



Gathering together
to share our past
& build a future



Individually, humans can accomplish incredible feats. However, true growth and accomplishment hinges on the support of those around us. Now is the time to assemble, rally and convene with anyone and everyone that you can. It will open your eyes to the possibilities that arise only from collaboration and cooperation.



4 From the Alumni President

Alumni News

5 Summer Evenings Spent Together

A recap and list of upcoming alumni events.

6 Appreciation & Gratitude: Alumni Donations

Features

7 Where the Best Gather
Reconnecting with peers during Alumni Weekend.

18 Nearly 480 & Counting
Honoring 25 years of graduating the best in Radiologic Technology.

20 **Campus News**
College Committee Takes Active Approach to Healthy Lifestyles

21 Science Lab Honors Mary Balken's Legacy

22 Positive Culture, Growth & Outcomes Continue on Campus
A message from Dr. Tony Damewood.

23 Updated Online Campus Ushers in New Era

24 Capstone Project Summary

27 See You at the American Physical Therapy Association Conference
Gather with alumni in New Orleans this spring.

28 August 2017 Graduates
A listing of our newest alumni.

Awards & Recognition

30 College Service & Academic Departments Welcome New Leadership

31 Dr. Pat Perry Academic Scholarly Project Recipients Announced
Seven honored for achievements.

EXECUTIVE EDITOR Rita VanFleet
ASSISTANT EDITOR Ann Hagenau
DESIGNER Nicole Bonk
SENIOR WRITER Marie Dahlberg

CONTRIBUTORS Jen Anderson, Dr. Andreia Nebel, Jina Paul, Dr. Tony Damewood

The Alumni Times is a quarterly publication distributed by the Alumni Association of Clarkson College, 101 South 42nd Street, Omaha, Neb. 68131. Direct all story and photo submissions, changes of address or publication inquiries to Rita VanFleet, at 402.552.3516 or vanfleetrta@clarksoncollege.edu.



On the Cover

Sharon Boyer Flamme ('67) and Carol Peck Kabat ('67) warmly embrace. **7**

PHOTOGRAPH BY Todd Snover

From the Alumni President

Team collaboration is an important aspect in health care today, and many institutions are developing what they call a “huddle” to drive communication and relationships.

Recently, I read an article from the Institute for Healthcare Improvement that discussed the benefits and need for huddles in health care environments. The article explained that huddles “allow fuller participation of front-line staff and bedside caregivers, who often find it impossible to get away for conventional hour-long improvement team meetings,” and huddles “keep momentum going, as teams are able to meet more frequently.” Like myself, many of you want to continue growing and sharing ideas, which makes the huddle concept critical for health care.

In my place of employment, we conduct morning safety huddles where a representative from each unit, division or department meets for 15 minutes to discuss issues regarding equipment, environment, security, staffing or patients. In my experience, the success of this approach is twofold: team members appreciate knowing what is going on and huddle participation encourages higher team engagement.

I often tell my staff members that they’re the specialists on our team. I want these experts to collectively gather, communicate and develop the best strategies for our department, facility and ultimately, our patients. Huddles provide an opportunity for teams to run the institution efficiently, anticipate patient needs and prepare staff to deliver the best patient care.

If you implement a huddle concept in your work environment, you will see its benefits. You’ll experience a more supportive team culture, an improvement in relationships and the delivery of safe, dependable patient care.

Regardless of your role in health care, I encourage all of you to huddle. Remember to share your ideas, concerns and successes because they’re important components to the team’s growth. I also challenge you to take this concept outside of your profession by developing your huddle skills within your family, friend group and alma mater. Your classmates and Alumni Association would love to huddle with you during the wonderful events planned throughout the year!



Jen Anderson, M.H.A., RHIA ('10),
Alumni Association President

Noteworthy

Huddle with us throughout the fall and winter seasons during an upcoming alumni gathering! See page 5 for full event and registration details.



1 / A few alumna and their guests enjoy conversation as they take in the baseball game's events. 2 / Laura Bates participates in the "Name that Movie" trivia game.

Summer Evenings Spent Together

A recap of the summer Alumni Association events

Taking in the sights and sounds of America's pastime

Alumni, friends and family of all ages attended the Storm Chasers baseball game on Sunday, July 30 at Werner Park in Papillion, Neb. Thirty-two Clarkson College guests gathered to take in America's favorite pastime, making the second annual Alumni Association summer outing a success.

The Storm Chasers brought in their 49th victory of the season with a 5-2 win against the Fresno Grizzlies in front of nearly 7,500 spectators. Clarkson College attendees enjoyed the entertaining game and joined forces to participate in the “Name that Movie” trivia game led by Laura Bates, daughter of Rita VanFleet ('67, '94, '06). Alumni who brought children had the benefit of the Centris Family Fun Zone, which featured a merry-go-round and bouncy house to help pass the time for the little ones. It was a great evening for all.

Dodgy weather cancels wine tasting gathering

On the evening of June 30, alumni and friends gathered for a highly anticipated evening of wine tasting, snacks and Beatles music at Soaring Wings Winery on the outskirts of Springfield, Neb. Unfortunately, inclement weather forced a change in plans and caused the evening to come to an abrupt close.

Upcoming Alumni Events

Mark your calendar and gather together with us

October: Door Décor Decorating Event

Oct. 21 8 a.m. \$45 per person
Clarkson College, Howard Hall
Grab a friend or two and let your creative side shine during a craft-filled morning this October. Decorate holiday-inspired wooden door hanging cutouts for your home or office décor. Cutouts are made in advance, and paid registration is required to attend.

December: Holiday Lights Tour

Dec. 7 7 p.m. Omaha area
\$10 per person

Take a break from the chilly weather and let the magic of the holiday season warm your spirits. Enjoy seasonal trivia, snacks and festive light displays during a 2.5 hour holiday lights tour. Save your seat by Dec. 1.

January: 8th Annual Bowling Tournament

Jan. 27 6 p.m. Ralston
\$25 per person

Gather three talented bowling buddies and join us for an evening of pizza, bowling and prizes at Scorz Sports Center. Teams are encouraged to select a witty bowling-themed team name and wear attire that fits their selected name. Reserve your lane by Jan. 8.

If you would like to participate or have questions about an upcoming event, contact Alumni Coordinator Rita VanFleet at vanfleetrita@clarksoncollege.edu or 402.552.3516.

Appreciation & Gratitude

Alumni Donations

A warm thank you to the following donors who graciously donated to the Alumni Scholarship Fund from Sept. 1, 2016 through Aug. 31, 2017. The generous contributions assisted the Alumni Association in awarding three \$2,000 scholarships to current students. This year's recipients are Undergraduate Nursing student Mindy Faubion, Graduate Nursing Health Care Administration student Stacey Salcedo and Family Nurse Practitioner student Amanda Wolff. The Alumni Association and recipients are very grateful to all who have helped to make these scholarships possible.

Donations up to \$99

Siti Arshad-Snyder, College faculty
Kathleen Shiley Ball ('92), in memory of Sherman Shiley
Beverly Bethart ('88), in memory of her grandmother Maggie Nester
Bianca Braxton ('15)
Susan Bristol ('78)
Florence Cline ('44), in memory of classmates Opal Cooper ('44) and Estelle Mortensen ('44)
Carla Dirkschneider ('07)
Colleen Dummer ('95)
April Hilleman ('08, '14), in memory of Regina Dixon ('08)
Norma Hintz ('87, '88), in memory of her husband and son, Donald Francis Hintz Sr. and Donald Francis Hintz Jr.
Gary Javitch ('95)
Jeanette Kassmeier ('72, '86), in memory of Alice Kellogg
Joan Killinger ('64), in memory of Thomas M. Davies
Trish Kolterman, in memory of Marjorie Schimonitz ('50)
Terri Lannan ('74)
Rosemary Lebeda ('00)
Carol McCall ('68), in memory of Marcia Green Stoller
Letitia Naprstek ('68), in memory of Sharlene Hansen ('68)
Andreia Nebel, College Vice President of Academic Affairs
Cheryl Olomon ('71)

Aubray Orduña, in memory of Mary Balken
Jacqueline Parmenter ('93, '09)
Debra Ross ('14), in memory of Sally Frohn ('14)
Ann Seckman ('98), in memory of Kent Seckman
Jeaniffr Snide ('13)
Rita VanFleet ('67, '94, '16), in memory of Joan Wingert
Marcia Fitzgerald Weeks ('65), in memory of her grandmother Virda Fitzgerald

Donations of \$100 to \$499

Lygia Arcaro ('98)
Louann Coatsworth ('77, '88)
Linda Jensen, faculty
Janice Danielson Drange ('67), in memory of Frances Hanson Danielson
Debra Kozeny ('77, '94)
Mary Krecek ('67)
Annette LeRoy, honorary alumna
Doris Sell ('65), in memory of Judy Sterns Roemerman ('71)
Ruth Briggs Siefert ('66), in memory of Emory and Frieda Briggs

Donations of \$500 to \$999 & greater

Carol Engquist ('83)
Carol Gottsch
Ann VanHoff, honorary alumna

Donations of \$1,000 & greater

Anonymous, in honor of the Clarkson School of Nursing class of '66, with special memories of those classmates who have passed away

Making your contribution

Donations to the Alumni Scholarship Fund may be made throughout the year. It is an excellent way to recognize or memorialize someone while helping students meet the financial challenges of their Clarkson College experience. Donations can be sent to: Alumni Coordinator, Clarkson College, 101 South 42nd Street, Omaha, NE 68131. Please make checks payable to Alumni Association Scholarship Fund.



Where the Best Gather

Reconnecting During Alumni Weekend



1 / Alumni discuss on their hands-on school experiences during the campus tour. 2 / '67 classmates share a laugh in the on-campus Simulation Lab. 3 / Kennetha Scheer ('67) and attendees enjoy the Alumni Brunch presentations. 4 / Carla Dirkschneider ('07), Trish Weber ('95, '08, '11), Joan Blum ('81, '86) and Vanessa Wagner ('92) are all smiles during the alumni dinner celebration. 5 / Savoring the treasured memories and mementos.



Every now and again,

it is important to reflect on past shared experiences and gather together to reminisce about life's journeys both in and out of health care. For alumni of Bishop Clarkson School of Nursing and Clarkson College, it's a refreshing change of pace to connect with one another through treasured memories years long after graduation day.

The two days of reconnecting with their alma mater and former classmates began with warm, heartfelt greetings as the anniversary classes of 1967, 1977, 1987 and 1992 welcomed one another to Alumni Weekend held Sept. 14–15 in Omaha, Neb.

The alumni celebrations began with brunch on Sept. 14 on campus in Howard Hall. Alumni reminisced and reconnected with their classmates, some of whom they had not seen since graduation. Attendees reflected on their Bishop Clarkson School of Nursing or Clarkson College education and echoed positive sentiments toward their former instructors, both of which prepared them well for their professions.

Each anniversary class attendee received a memory book highlighting his or her graduation year, and guests discussed the importance their education played in a rewarding health care career. "It was a privilege to attend school here," one alumna said. "I feel like the experience made me the best nurse that I could possibly be! I was well prepared for a career in critical care." Another alumna said, "I hold

1 / Memorabilia from the class of '77. 2 / A stop at Joslyn Art Museum to view the Dale Chihuly artwork on display. 3 / Nancy Wheeler, Diana Baker, Sonya Lee Struthers, Donna Wegner, Janet McGrath and David Nissen reminisce while viewing a '77 scrapbook. 4 / Alumni Association President Jen Anderson ('10) addresses the Heritage Garden Walk audience. 5 / Florence Nightingale sculpture on the west side of Kiewit Hall. 6 / 1967 alumna gather at the home of hostess Patti Gress ('67).



a special place in my heart for Pat Perry and many instructors."

Clarkson College President Dr. Tony Damewood updated attendees on the progress of the College and welcomed them back to campus.

Following the brunch, attendees were treated to a campus tour led by student ambassadors. Exploring the updated classrooms and facilities allowed alumni to see the advancements in educational experiences over the past 30–50 years. They experienced the modern Simulation Lab for the first time and explored the capabilities of the birthing simulation mannequins.

HERITAGE GARDEN WALK

At the tour's conclusion, College faculty and staff joined the anniversary classes in the Clarkson Service League Heritage Garden for the Heritage Garden Walk. The annual ceremony was a celebration to honor and highlight the amphitheater seat and three brick donations over the past year. The first brick was dedicated to Merlene Eddy, mother of General Education Director Lori Bachle. The 22-year service legacy of Jack Morin was commemorated with the second brick donation given by the Center of Teaching Excellence department. Another brick was donated in memory

of the student whose life was tragically lost in a campus shooting at North Lake College in Irving, Texas. The caring legacy of Facility Services Coordinator Kari Kelly was commemorated by an amphitheater seat donation from Clarkson College. Kari passed away in May, and her family was present to honor her memory and thank the College community for its continued support during the difficult season. The Heritage Garden Walk celebration pays tribute to the honorees' lives and assists with the Alumni Scholarship fund.

1 / Alumnae Kathy Hoebelheinrich ('77) and Sonya Struthers ('77). 2 / The class of 1967 celebrating 50 years. Seated: Marsha Brennan, Janice Danielson Drange, Kennetha Boyer Scheer, Frances Krupicka McClean, Judy Mainquist Korte, Angie Larsen Hemminger. Standing: Patti Stough Gress, Sharon Boyer Flamme, Carol Peck Kabat, Karol Taylor Hamsa, Jeanine Keiser Kline, Rita DeSciscio VanFleet, Susan Werblow Schweitzer. 3 / 1977 alumni Nancy Kennedy Wheeler, Diana Baker, Janet McCumber McGrath, Sonya Lee Struthers, Donna Weishahn Wegner, David Nissen. 4 / Classmates from '87 Mary Beth Brennan and Sue Stinson. 5 / Alumnae from '67 share a moment during the trolley tour.

ALUMNI RESPOND

WAS THERE ANYTHING IN PARTICULAR THAT MADE YOUR SCHOOL EXPERIENCE UNIQUE?

"Living in the dorm was a great life experience. If you can coexist with a group of young women, you can live with anyone. I enjoyed it. I lived (boarded) with an elderly woman with no rules while I attended high school. My parents lived on a ranch 30 miles from the small town, and it took more than an hour to make the trip in good weather. In winter, it was normal for the trails (roads) to be impassable for six or more weeks at a time. After being independent at 14, I could not grasp the reasoning for any of the dorm rules! You had 'quiet time' when everyone had to be in their room or the library studying. There was a bed check to be sure everyone was in their rooms at night. After the first semester, you could be out until 10 p.m. one Saturday night, but you had to sign out, say where you were going, what time you left and when you would be back."

"It was a privilege to attend school here. I feel like the experience made me the best nurse that I could possibly be! I was well-prepared for a career in critical care."

"Cindy Beckler and I (Jan McGrath) snuck to Lincoln to see our boyfriends during finals week in spring 1975. We didn't tell anyone because we should have been studying. A tornado struck Omaha while we were in Lincoln, and we were very delayed in getting back to the dorm. People were in a panic. No cell phones. We were in so much trouble at school and with our families."

"We were so well-prepared for the 'real world!'"

"Mrs. Perry. I was always so impressed with her personally—especially for her knowledge. When I was teaching, I used her words and tried to emulate her in every way. When I was searching for an MSN program, I called her for advice. I was so afraid to talk to her, but she went on as though we were best friends. She asked why I wasn't looking at Clarkson College, but I didn't know about the MSN program. I applied and graduated in 1997."

"Allowing people who were married to attend nursing school and live off campus. Having Pat Perry and Winnie Davenport as instructors was great."

"The expectation that when I graduated, I would be 'a nurse.' There was no question that you could manage a team, floor, an OB delivery or an ER crisis—maybe all of those before we even had our State Board results back! We were given the education and tools to meet those expectations, and I have always been grateful."

"The fellow classmates made Clarkson College the best experience. We were a mix of traditional and non-traditional students who worked together to lift one another up. Much like a group of dolphins will swim in a circle around an injured, sick dolphin to help it, we were a school of dolphins. We had success together."

ALUMNI RESPOND

GATHERING TOGETHER WITH SONG

A highlight from the historic trolley tour included renditions of two Bishop Clarkson School of Nursing songs sung by Carol Peck Kabat ('67). Sung to the tune of "O Tannenbaum," the "Clarkson Girls of Kiewit Hall" was a pleasant reminder of nursing school days for the 50th anniversary class.

"Clarkson Girls of Kiewit Hall"

The Clarkson girls of Kiewit Hall are just like sisters one and all. They look alike in uniform, and have a riot in the dorm. When graduation's here at last, and through the doors we all have passed, we'll all remember Kiewit Hall, and Clarkson girls the best of all.



1 / Alumna guests at this year's brunch. Carla Dirkschnieder ('07), Jeanette Kassmeier ('72, '86), Jen Anderson ('10), Vanessa Wagner ('92), Shirley Mondero ('95) and Trish Weber ('95, '08, '11). 2 / Admiring the Dale Chihuly installation during the historic trolley tour. 3 / Absorbing the details and history at Trinity Episcopal Cathedral. 4 / Alumni gather with Dean Loya in front of the Cathedral's late Gothic Revival-style altar. 5 / A close-up of the amphitheater seat and brick donations in the Clarkson Service League Heritage Garden.

HISTORIC TROLLEY TOUR

A trolley tour of historic Omaha locations wrapped up the first day of Alumni Weekend. The tour featured many notable Clarkson School of Nursing sites and a memorable stop at Trinity Episcopal Cathedral. Dean Loya led the tour of the Cathedral and reflected on its 134-year history in great detail. In the late 1800s, Bishop Robert

Harper Clarkson would preach to the congregation while his wife Meliora and two daughters listened in the audience. The Cathedral holds many tributes to Omaha's early founders, and it has also played a significant role in the history of Bishop Clarkson School of Nursing and Clarkson College. Cappings, convocation and graduation

ceremonies were held in the space, and the Cathedral is one of a few original Omaha landmarks still in use today.

During the trolley ride, Carol Peck Kabat ('67) sang two Bishop Clarkson School of Nursing songs, "A Clarkson Nurse is Hard to Beat" and "Clarkson Girls of Kiewit Hall."



Alumna Patti Stough Gress ('67) continued the day's celebrations and hosted her classmates at her Riverfront apartment following the trolley tour. Alumnae recalled their time in the dorms, shared stories about their adventures and recalled being the only class "kicked out" of nurses' training.

CONTINUING EDUCATION EVENT, FUN & FESTIVITIES

Friday morning began with a continuing education event titled "Cultural Awareness Impacting Refugee Health Care." Hosted by the Alumni Association of Clarkson College and the Professional Development department, the presentation focused on awareness

and the additional challenges providers must overcome to provide health care services to refugees in Nebraska. The event featured local experts on the topic: Nebraska Refugee Health Coordinator Kristin Gall, R.N., M.S.N.; Lutheran Family Services Refugee Resettlement

1 / '67 classmates Karol Hamsa, Susan Schweitzer, Jeanine Kline and Carol Kabat observe mannequin Victoria's functionality in the Simulation Lab. 2 / The class of '67 are all smiles during a cocktail party held Thursday evening in Patti Gress' home. 3 / Patti Gress and Janice Drange stand near a beautiful bouquet featuring yellow roses, the class flower of 1967. 4 / Trish Weber asks a question during the continuing education event in Howard Hall. 5 / Presenters Jaleel Oladipo, Tanya Howard, R.N., B.S.N., and Kristin Gall, R.N., M.S.N. 6 / Attendees take in the Heritage Garden Walk event in the Courtyard.

ALUMNI RESPOND

WHICH EXPERIENCE OR COURSE CHALLENGED YOU THE MOST?

Class of 1967

"The psych rotation at Hastings was very challenging. I learned so much about human behavior. I also learned that I had a gift for listening and was able to develop that skill while listening to my patients."

"Psych Nursing at Hastings. Living on campus while trying to get back to Omaha any way I could (hitch rides, bus, train)."

Class of 1977

"Diabetes/GI. I had chicken pox and missed the first week of the rotation. I started behind, weak and exhausted. It took me the entire eight weeks to catch up!"

"Psychiatry was the most interesting course for me. I worked at Richard Young hospital for five years and then at Systems Associates in outpatient therapy for about five years. Former psych instructor Penny Wilcox ('49) owned Systems Associates. I learned so much from her, and psych has played an important part of my life."

"I loved all the classroom experiences, but my most challenging course was ICU clinical. I remember being afraid of everything! The instructor was strict, the patients were so sick, and I was terrified. Those clinicals couldn't have finished soon enough. I passed, but I never enjoyed working in ICU."

"GI. The course was great, but my teacher did not like my handwriting—it hasn't improved. I had to rewrite each care plan every night in ink and print it!"

"Chemistry. I barely passed."

Class of 1992

"My psych rotation was very difficult. It made me take a hard look at my own life, and it caused me to question my perception and skills. I lost my best friend that semester. She took her own life, and it made me doubt myself. It was the care and compassion from my instructors and classmates—and a lot of conversations with counselor Ann Keffer—that I made it through."



Coordinator, Jaleel Oladipo; and Tanya Howard, R.N., B.S.N., Clinic Nurse Coordinator at CHI University Clinic.

The panel explained the differences between refugees and immigrants and discussed the challenges refugees face upon their arrival in America. Refugees must meet mandatory requirements within a short amount of time, which often causes complications for them and their health care providers. The event speakers expressed the importance of health care professionals understanding the refugees' perspectives, challenges and rights in order to move forward with the best solutions.

The Weekend ended with dinner and entertainment at Champions Run on Friday evening. Alumni enjoyed their continued conversation, creating a wonderful atmosphere for the final Alumni Weekend event. Musician Mark Weber provided the evening's entertainment, which featured sing-alongs and musical numbers from every era.

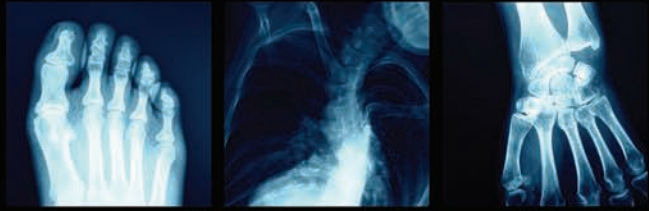
As the Alumni Weekend events came to a close, goodbyes were shared, and alumni left with more fond memories of their former classmates, friends and the College.

A SINCERE THANK YOU

A special thank you to all who assisted with Alumni Weekend and especially those who traveled to partake in reuniting with their classmates. Without a doubt, the events were thoroughly enjoyed by those present to represent this year's anniversary classes.



1 / Alumna celebrating their 50th anniversary. Seated: Kennetha Scheer, Carol Kabat, Judy Korte. Standing: Susan Schweitzer, Frances McClean, Rita VanFleet, Sharon Flamme, Angie Hemminger, Karol Hamsa. 2 / Trish ('95, '08, '11) joins her husband Mark Weber for a few songs. 3 / Jackie Parmenter ('92, '09) sings with the evening's musician, Mark Weber. 4 / Alumnae from '95, Trish Weber ('95, '08, '11), Nicole ('95, '97) and Shane Hardin, and Colleen ('95) and Cory Drummer. 5 / Alumni Association President Jen Anderson ('10) welcomes guests to Champions Run.



NEARLY 480 & COUNTING

HONORING 25 YEARS
OF GRADUATING THE BEST
IN RADIOLOGIC TECHNOLOGY



The lowest level of Clarkson College houses the radiology lab, a space full of equipment and machines that line the walls and hang from the ceiling. While the lab's layout and equipment have changed over the years, the commitment of the Radiologic Technology (RT) department faculty has remained the same: to prepare each RT student to be the best in their field.

As the program celebrates 25 years of preparing high quality graduates, it's easy to see how drastically the landscape of radiology has changed since the program's first graduating class in 1993. The field continually shifts as new techniques and technological advancements become available. Associate Professor Patricia Weber, M.H.A., RT (R), (CT), is a three-time Clarkson College graduate and has been a faculty member since 2006. For her, the field's advancements are what make the profession exciting.

"In the radiology field, nothing is stagnant," Weber said. "New research and techniques occur all the time, which is exciting. The goal is always to develop the best images for our patients."

One way the RT department continues to stay on top of the advancing profession is by updating the lab's equipment. Earlier this year, the department purchased the Shimadzu Digital Radiography (DR) unit, a top-of-the-line general radiography system. The upgrade grants students access to the most advanced technology available on the market before practicing their skills in real-world scenarios.



Alumnae Patricia Weber ('95, '08, '11), Ann Hagenau ('95, '97) and Katie Fulton ('04)

"Students now learn both computed radiography (CR) and DR imaging technology," said Assistant Professor and three-time alumna Ann Hagenau, M.S., RT (R)(M). "The changes in the lab indicate the outstanding support and commitment the College has for the program."

Assistant Professor Katie Fulton, M.S., RT (R)(VI), agreed. "We had CR equipment on campus already, but advancing to DR allows us to provide an experience more in line with what technologists use at the clinical site," Fulton said. Educating students on both CR and DR imaging will ease their transition from the classroom to clinical experience.

The DR unit addition is not the first equipment update for the lab, and it will not be the last. The RT program must continually adapt to meet the field's growing standards. "The changes reflect the rapid advancement in the radiology field," Hagenau said.

While today's students work with some of the best technology available, alumni remember using equipment that was strictly for demonstration purposes only.

"The equipment available back then was only used for practicing radiography exams," Weber said. "With equipment incapable of producing x-rays, students were unable to see the entire process like they can with today's technology."

To give students hands-on experience, the lab upgraded to an energized x-ray machine, automatic film processor,

and body part phantoms to create realistic film screen images. As technology advanced, a machine with fluoroscopic capabilities replaced the energized x-ray unit. When the program incorporated a CR reader and full body phantom to the lab, students had the ability to create images either digitally or via film.

Each change reflects the program's dedication to providing students with the tools they need to succeed. This commitment to excellence draws alumni back to Clarkson College.

"When I came back to begin working at Clarkson College, I truly felt like I got my dream job," Weber said. "Every day, I feel the passion and excitement of the students, and I share mine with them."

"I knew from the time I sat in a classroom at Clarkson College that I wanted to teach," Fulton said. "The faculty here are passionate about the profession, and it makes me want to be that inspiration for the future of radiology."

You're invited to join us

We are excited to celebrate the 25th graduating class of the RT program at Clarkson College. To honor this milestone, we're inviting alumni to visit campus and see all of the changes happening within the program. Join us for an open house event on Nov. 9 from 4–6 p.m. to tour the lab, view its new equipment, and visit with the program faculty members as we celebrate 25 years of graduating the best.



College Committee Takes Active Approach to Healthy Lifestyles

Wellness initiatives and events focus on personal health

Each year, the Clarkson College strategic plan includes goals and critical success factors (CSFs) to improve the organization's future. A CSF implemented in 2011 focused on a College-wide employee wellness program that encouraged participation in health conscious events and activities on campus. The initiative also included benefit offerings that contribute to healthy lifestyles. With the support of the College community, the Wellness Committee was formed.

The Committee is led by Human Resources and consists of a cross-section of faculty, staff and management team members. The group meets annually to review employee health screening data with SimplyWell, a health and wellness partner of Clarkson College. The collected information forms the groundwork for the next year of healthy, active events.

Each activity is reviewed for employee interest and applicability to the College. Many of the Wellness Committee events are repeated annually due to positive feedback and strong employee participation. Walk-at-Work Day, Climb

the College and the Campus Flu Shot Clinic are a handful of the recurring annual events.

Walk-at-Work Day resembles a national program that encourages people to be physically active. College employees have three opportunities to walk with peers, record their steps and win free participation prizes. The program encourages employees to take part in Walk-at-Work day in April and continue the daily walking challenge throughout May, June and July. This year, 26 employees walked one mile each for a total of 52,000 steps taken on Walk-at-Work Day. The three-month summer challenge recorded 19.4 million steps for a total of 9,700 miles—a feat completed by 21 Clarkson College employees.

Climb the College is a non-competitive stair-climbing event that supports employees' personal health and wellness goals. The event tests participants' endurance by challenging employees to climb the main building's six flights of stairs as many times as physically possible within an hour timeframe. Faculty and staff members who complete a full trek are eligible to attend a post-event health

conscious lunch and are entered to win prizes. Last year, nearly 30 employees participated in this annual October event.

The Campus Flu Shot Clinic is a convenient way for the College community to stay vaccinated during the cold and flu season. The free flu shots are administered by nurse managers and faculty members, and the event is open to students, faculty and staff. In 2016, approximately 300 flu shots were given during the two-day event.

Extending healthy lifestyle changes to our students

Wellness on campus does not stop with employees. The Committee also collaborates with student organizations and hosts events that emphasize resiliency, relaxation and a holistic approach to healthy living for students and employees. The Wellness Committee's dedication to the health and wellness of the College community reflects an understanding that all aspects of personal health impact the ability to focus and achieve success, both in and out of the classroom.

Partnership continues success of wellness initiatives

SimplyWell provides free, annual health screenings for employees based on both self-reported and clinical results. Program participation incentives include reduced medical plan premiums, educational health-related emails and a nurse phone line for employees to discuss critical health issues. The Wellness Committee gathers the annual health screening data and provides a high-level picture of health for the Clarkson College community.

Science Lab Honors Mary Balken's Legacy

Mary E. Balken Science Lab serves as a tribute to the former faculty member

Clarkson College dedicated its Science Lab to honor Mary Balken, General Education Associate Professor who died in May 2016. Now the Mary E. Balken Science Lab, the space is a testament to Balken's dedication to her students and their understanding of the anatomy coursework material. Her commitment to higher education led her to continue teaching students in and out of the classroom—even after her cancer diagnosis.

Balken was a dedicated faculty member who taught anatomy for nearly 17 years at Clarkson College. Students and colleagues remember her as an individual driven by the potential of her students. Using her famed "bag of tricks," she always endeavored to find the right study technique for each individual, and loved witnessing a student's "light bulb moment."

To date, Balken is the only two-time recipient of the Dr. Patricia Book Perry Faculty of the Year Award, an annual peer-nominated accolade that recognizes individuals who have made substantial contributions to education at Clarkson College.

Outside of the classroom, she celebrated her artistic talents by painting watercolor landscapes and making jewelry for friends. She left an inspirational legacy full of love, caring and compassion for all those fortunate enough to know her.

The College community continues to embrace the humble, passionate spirit that she embodied through her natural ability to teach and inspire her colleagues, students and loved ones.

Positive Culture, Growth & Outcomes Continue on Campus

An annual summary from President Dr. Tony Damewood

The 2016–17 academic term was another strong, impressive year at Clarkson College. We achieved accomplishments through the hard work, discipline and dedication of our students, faculty and staff and through the support of alumni and the College Board of Directors.

Looking back, this past year resulted in several exciting achievements. The College received national recognition for the sixth consecutive year from *U.S. News & World Report*. Altogether, the College earned nine nationwide awards for our various health care focused programs.

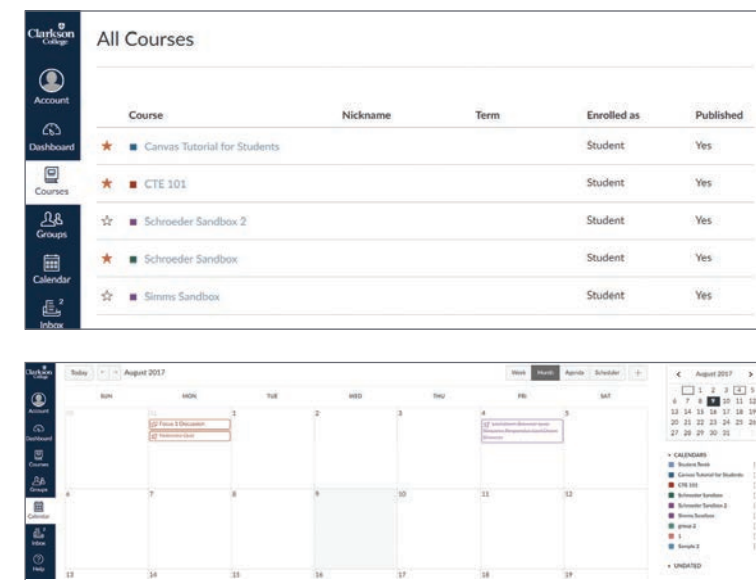
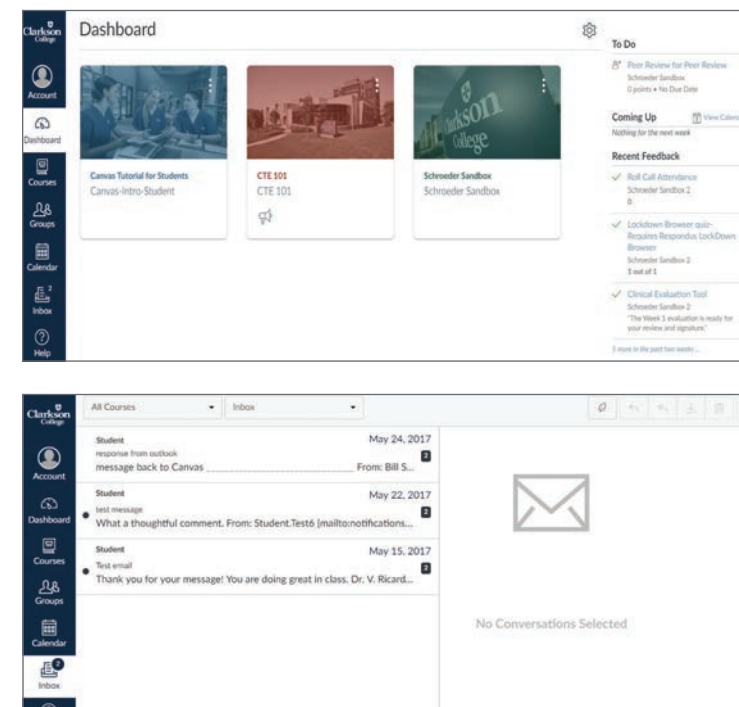
Academic outcomes remain very positive. Our 94 percent first-time licensure exam pass rate continues to be above the state and national averages, and our graduate employment rate is 91 percent. We continue to focus on quality improvement with core curriculum enhancements, assessment tool improvements and an updated online campus learning environment.

More than 1,200 students are enrolled this semester, and 179 new students joined the College at the start of the spring semester. This is a record number of new students for Clarkson College. As a result, many of our programs are at capacity due to faculty, space and clinical constraints.

Financially, the College had an outstanding year and ended with a positive budget variance of \$1.7 million. We are very proud to continue to offer a high quality education while maintaining the second lowest tuition rate of any private higher education institution in Nebraska.

High satisfaction scores indicate a positive culture at the College. The Student Satisfaction Survey resulted in a positive engagement score of 84 percent, which is much higher than the national average. The Employment Satisfaction Survey resulted in a positive score of 86.8 percent with an employee participation rate of 86 percent.

Positive outcomes in the budget, pass rates and satisfaction scores put Clarkson College in a strong position as we move into the next academic year. As the need for health care providers increases, we will continue to partner with Nebraska Medicine and other facilities to help fill the gap by graduating high quality, ethical and compassionate health care professionals. The majority of our students attend Clarkson College as referrals from our current students and alumni, which means that you play an important role in accomplishing our goals. Thank you for your continued support and dedication to the College.



A handful of screenshots of the updated learning management system illustrate the diverse, user friendly online platform.

Updated Online Campus Ushers in New Era for the College

Depending on which year you walked across the stage and became a Clarkson College graduate, a learning management system (LMS) may or may not have been a part of your everyday vocabulary. Today, Clarkson College students utilize a LMS, whether they enroll in an online program or take classes on campus. A LMS offers an organized approach to courses and hosts syllabi, weekly assignments, video lectures from instructors, quizzes, grades and discussion threads.

Nearly two years ago, Clarkson College assembled a committee to identify online

learning platforms in order to ensure the College offered the best online education delivery system to its students. After thorough research, the committee quickly realized it was time to replace the current system with a more sophisticated LMS. The group examined multiple options, including Blackboard Learn, Blackboard Ultra, D2L, Moodle, Moodle Rooms, Schoology and Canvas. After rigorous evaluation, the committee unanimously agreed that Canvas best aligned with the needs and vision of online education at Clarkson College.

"Canvas is miles ahead of our former LMS," said Dr. Ricardo Varguez, Center for Teaching Excellence Director. "The previous LMS was like using a flip phone, while Canvas is the equivalent of using a smartphone. You can accomplish most tasks with either, but the user experience is much better with the latter."

In addition to a more modern look and feel, Canvas offers advanced features such as a drag-and-drop interface,

multiple grading and assignment notifications, and text updates to remind students of important events happening in their courses. Instructors also benefit from SpeedGrader, a Canvas signature tool that allows them to seamlessly and directly annotate student assignments. The tool also offers rubric integration and audio and video feedback capabilities.

"Canvas provides a very intuitive user interface for both faculty and students," Varguez said. "We couldn't be more excited about it."

Clarkson College began utilizing Canvas during the spring 2017 semester, and all courses were fully integrated by the fall semester. The change exceeded student and faculty expectations, and both groups enjoy the optimized online learning and teaching platform.



August Capstone Project Summary

Each semester, the master’s degree-seeking students prepare a Capstone project that reflects an investigation into a question of practical importance by utilizing the critical thinking skills, knowledge, strategies, theories and principles learned throughout their course of study. The final outcome of this experience includes completion of a scholarly, evidence-based document that can be further revised for potential publication or a document that can be used by practitioners, educators, administrators or clients.

The Capstone abstracts are reviewed by the Alumni Association Board subcommittee and ranked using the established rubric. Following the Capstone presentations, Carla Dirkschneider distributed the certificates of merit to the selected winners. This semester, 42 master’s degree-seeking students presented their Capstone projects on Aug. 4 at Storz Pavilion on the Nebraska Medicine campus.

Ann Rogers earned first place for her abstract *Chronic Migraine Pain in the Emergency Room Patient: Comparing Medication Effectiveness* (advisor Dr. Jane Langemeier). Second place was awarded to Jennah Ramsey for her abstract *The Importance of Nursing Support and Knowledge for Breastfeeding Success* (advisor Dr. Layna Himmelberg). Abbie Albrecht’s abstract (advisor Dr. Jane Langemeier) and Tanelle Franko’s abstract (advisor Dr. Stephen Hardiman) tied for third place.

Chronic Migraine Pain in the Emergency Room Patient: Comparing Medication Effectiveness by Ann Rogers

In the United States, more than 5 million emergency room (ER) visits are patients with migraines seeking

treatment (Minen, Taney and Friedman, 2014). Several options for treating migraines include acute and preventive medications. The purpose of this study is to determine the effectiveness of acute medications, narcotics, non-narcotics or a combination of medications in relieving the ER patient’s migraine pain. The Roy Adaptation Model (1996) supports the belief that a patient is a whole being responding to triggers in the environment—adapting or not. The model focuses on adapting to chronic migraine pain interventions promoting better quality of life outcomes for the patient living with migraines (Tolson and McIntosh, 1996). A descriptive retrospective study reviewed clinical data from male and female patients (N = 38) between the ages of 19 and 90 years of age with a documented history of migraines presenting to an urban Midwestern hospital emergency room. The Wilcoxon assigned ranks test showed statistical significance of relieving migraine pain with a Z score of -4.638 (p = < 0.0001) for the non-narcotic medication group, and a Z score for the narcotic plus non-narcotic medication group as -2.060 (p = 0.05). Future research seeking new treatments with non-narcotic drugs for safer and effective dosing is necessary. In addition, genomic research is necessary to identify genetic causes and predispositions for migraines.

The Importance of Nursing Support and Knowledge for Breastfeeding Success by Jennah Ramsey

Breastfeeding provides the ideal nutrition to newborns and growing infants. In addition to nutrition, breastfeeding promotes mother-infant bonding along with numerous other benefits. Breastfeeding initiation and adequate breastfeeding support while in the hospital are essential to breastfeeding longevity and success

(Demirtas, 2015). “Early experiences such as availability of nurses, receiving practical support, encouragement and compassionate care in hospital are among the factors affecting the initiation and continuation of breastfeeding” (Demirtas, 2015, p. 494), although some nurses may be uncomfortable assisting mothers with breastfeeding. The aim of this study was to determine the attitudes and knowledge of labor and delivery/mother-infant nurses concerning breastfeeding with the hope to potentially identify educational needs/ recommendations for changes in nursing practice to help enhance breastfeeding experiences for new mothers. This study employed a quantitative research design in which data collection consisted of a questionnaire completed by nursing staff to assess their attitudes and knowledge in regard to breastfeeding. Overall, the participants felt that all mothers should be encouraged to breastfeed (66.67 percent), with the majority of nurses strongly agreeing that mothers need practical and emotional support to establish successful breastfeeding (88.89 percent). Interestingly, results found that nurses at this given facility do not feel that nurse-to-patient ratios are ideal, which interferes with available time to spend providing breastfeeding education and support. Additionally, a majority of the participants (66.66 percent) felt that the nursing staff does not have adequate training and skills to support breastfeeding mothers.

Excessive Gestational Weight Gain in Overweight and Obese Women and its Relationship to Primary Cesarean Section Rates by Abbie Albrecht

A pregnant woman’s gestational weight gain and body mass index (BMI) affect both maternal and neonatal health (Yao et al., 2014). In 2015, 32 percent of pregnant women in the United States

fell within the Institute of Medicine’s (2009) recommended pregnancy weight gain, while 48 percent were above (Dudenhausen, Grünebaum and Kirschner, 2015). The objective of this research determined if excessive gestational weight gain in overweight and obese nulliparous pregnant women related to the rates of a primary Cesarean section (C-section). The Health Belief Model emphasizing perceived benefits of preventing excessive weight gain for the overweight and obese pregnant woman guided the study (Glanz, Rimer and Viswanath, n.d.). A retrospective chart review compared the number of vaginal and primary C-sections of nulliparous women ages 19 to 45 years starting their pregnancy with BMI of 25.0 or greater and were admitted to a Midwestern Critical Care Access hospital from Jan. 1, 2011 through Dec. 31, 2016. Chi-square analysis of vaginal and C-sections of mothers with excessive, recommended or less than recommended gestational weight gain was 2.745, with a p-value of 0.253. Overweight and obese women who had excessive gestational weight gain delivered at a 10.1 percent proportional difference with a non-significant p-value of 0.109. Further research on counseling women before and during pregnancy about nutrition and the risks associated with pre-pregnancy weight and gestational weight gain is important for maternal and neonatal health.

What Differences are Found in Late Preterm Breastfed Infants Placed Skin-To-Skin vs. Those Placed on the Radiant Warmer and Wrapped Immediately After Birth? by Tanelle Franko

Accounting for nearly three fourths of the preterm births per year in the United

continued on page 22

AUGUST 2017
Graduate Capstone Projects

VENUS ANDERSON *Verbal vs. Written Education to Improve Parent Compliance with Feeding Documentation after Discharge in Children with Congenital Heart Disease*, advisor Dr. Amberly Wagner-Connolly

SHAUNA BECKMAN *Perioperative Nurse’s Perceptions of Effective Coping Mechanisms Utilized to Decrease Fatigue Symptoms*, advisor Dr. Aubray Orduña

AMANDA BERANEK *Perceptions of Nurses and Medical Assistants Related to the Practice of Pediatric Height and Length Measurements in the Clinical Setting*, advisor Dr. Janet Henriksen

AMBER BOWMAN *Graduate Nurse Perceptions of Readiness to Meet Workplace Demands after Participating in a Nurse Residency Program*, advisor Dr. Janet Henriksen

ALLISON BRADSHAW *Average MEWS Scores and Frequency of Code Blue Events for Adult Medical/Surgical Floor Patients*, advisor Dr. Janet Henriksen

LAURA COTTE *The Role of a Personalized Primary Care Medical Facility with Addressing Access to Care*, advisor Carla Dirkschneider

JESSICA CRANDALL *Does an Educational PowerPoint Presentation Improve the Registered Nurses’ Knowledge on the Prevention of Catheter Associated Urinary Tract Infections?*, advisor Dr. Nina Wardell

CRYSTAL DAILEY *Does the Implementation of Rural Trauma Team Development Course Affect the Length of Stay in the Emergency Department?*, advisor Dr. Pam Holtz

PAISLEE DALTON *The Effects of Triage Education on Rural Hospital’s Emergency Room Nursing Staff*, advisor Dr. Stephen Hardiman

JACLYN ECABERT *Perceptions of Barriers to Self-Care Among Nurses on a Cardiac Progressive Care Unit*, advisor Dr. Pam Holtz

ASHLEY EISENSCHENK *Perceived Fatigue in Emergency Room Nurses and its Effects on Professional Quality of Life*, advisor Dr. Stephen Hardiman

SHARISE FIORI *Effective Pain Management for Trauma Patients with Rib Fractures*, advisor Dr. Sue Haddock

BRANDON FLEHARTY *Using Mobile Phone Applications to Support Addiction Recovery*, advisor Carla Dirkschneider

AUBREY FRALEY *Willingness to Donate Cord Blood: Does the Source of Education Matter?*, advisor Dr. Sue Haddock

KARI GOERING *Perceptions of Graduate Nursing Students Regarding the Nursing Role in Educating Parents of Obese Children*, advisor Dr. Amy Clark

JESSICA HEITKAMP *Does Use of a Discharge Pharmacist Significantly Reduce 30-Day Readmission Rates?*, advisor Dr. Pam Holtz

BLAKE KADINGER *Hospital Consumer Assessment of Healthcare Providers and Systems (HCAHPS): Does Providing a PowerPoint Presentation on the Content and Scoring Structure of HCAHPS Survey to Registered Nurses on a Cardiac Unit at a Major Midwestern Health System Improve Scores?*, advisors Dr. Pat Coyle-Rogers and Dr. Layna Himmelberg

AMY KASTNER *PTH Control in Dialysis Patients: Zemplar vs. Hectoral*, advisor Dr. George Rogers

TESA KEELING *Saved by the Bell: Does Education on Alarm Reduction Techniques Result in Decreased Alarm Fatigue?*, advisor Dr. Layna Himmelberg

August Capstone Project Summary

continued from page 21

States, late preterm infants are a unique subset of infants born between 34 weeks and 36 weeks, six days gestation. Late preterm infants have been shown to be at high risk due to metabolic and physiologic immaturity, which increases complications such as respiratory distress, temperature instability and hypoglycemia. This study described the impact immediate skin-to-skin contact with mother and infant for the first hour of life had on the neonatal adaptation, measured by respiratory rate, temperature and blood glucose. A retrospective descriptive analysis was done utilizing infants between 35 weeks and 36 weeks, six days gestation, which included 90 infants (26 skin-to-skin and 64 not skin-to-skin). Analysis described: The mean of the infants' respiratory rate at one hour of life ($p = 0.92146$) and

two hours of life ($p = 0.19938$). The mean infants' temperature at one hour of life ($p = 0.46249$) and at two hours of life ($p = 0.01117$). The mean of the infants' glucose ($p = 0.43651$). This study described a significant difference in the two hour temperature in the infants that received immediate skin-to-skin contact (98.662) when compared to infants that did not receive immediate skin-to-skin contact (98.378, $p = 0.01117$). No other significant differences were described within the study. Future research extending the timeframe of immediate skin-to-skin contact from five minutes to 10 minutes could assist in the inclusion of infants born via cesarean section, which has potential to strengthen the results.

Discover additional abstracts online

There are more than 400 graduate Capstone projects available online through the Clarkson Service League Library. If you're interested in reading an unpublished abstract from this or a previous semester, visit <http://bit.ly/2hmvVgt>. In the search box, type "capstone," the author's name or a few keywords and hit enter. You may also locate Capstone projects by selecting the Lists tab and clicking Special Titles to view the projects in alphabetical order.

Questions or comments may be directed to the Clarkson Service League Library by calling 402.552.3387 or sending an email to library@clarksoncollege.edu.



See You at the American Physical Therapy Association Conference

Thousands of physical therapy professionals will meet in New Orleans for the annual American Physical Therapy Association (APTA) Combined Sections Meeting (CSM) scheduled for Feb. 21–24, 2018. The CSM is the largest gathering of physical therapists (PTs), physical therapist assistants (PTAs) and students. The event averages more than 12,000 professionals annually.

Academic Outreach Liaison and Clarkson College representative, Jon Clay, will attend the CSM to meet with event guests and promote the Bachelor's degree in PTA. This online degree option launched in fall 2016 in response to the increasingly high professional standards set for entry-level PTAs, and the first class began in the fall 2017 semester. The College is among one of three institutions in the nation to launch a PTA Bachelor's degree option, which is designed for certified PTAs seeking educational advancement and increased career opportunities.

"I am excited that Clarkson College is one of a few schools providing this degree option for PTAs," said Clay. "It's a step in the right direction because it helps to enhance their PTA careers, whether they are right out of school or have practiced for years."

Dr. Michael Witte, Director of the PTA program, notes how the degree option enhances the careers of both new and practicing PTAs.

"For the College, this new degree offering focuses on helping PTAs work toward becoming expert clinicians, engaged community members and leaders within their organization," said Witte. "While other Bachelor's degrees may prepare a student for one or the other, our degree meets all three of those objectives."

The Clarkson College Bachelor's degree in PTA is offered online with part- and full-time study options available. Students may complete the 46 credit hour coursework in as few as four semesters. One on-campus visit per semester is required to demonstrate clinical competencies. Learn more about the degree by visiting ClarksonCollege.edu/PTA.

Interested in connecting with your peers in New Orleans?

If you plan to attend the APTA CSM conference in February and would like to connect with other Clarkson College alumni, contact Jon Clay via email at clayjon@clarksoncollege.edu.

AUGUST 2017

Capstone Projects

ALEXANDRIA KOHN *Assessing the Extent of Patient Non-Adherence Associated with Prescription Medication Cost at a Rural Health Care Organization*, advisor Dr. Mary Lynn Vogel

BOBBI KREIKEMEIER *Increasing Type II Diabetic Patient Awareness of the Patient-Centered Medical Home Model*, advisor Dr. Mary Lynn Vogel

MARY LAUSTEN *Comparison of Hand Hygiene Knowledge, Self-Reported Practices and Attitudes of Registered Nurses in a Midwest University Hospital*, advisor Dr. Mae Timmons

ERIN LEONARD *The Role of Sepsis Education in the Knowledge of Acute Care Nurses*, advisor Dr. Amberly Wagner-Connolly

AMY LEVINGER *Do Educational Presentations Enhance Teachers' Knowledge of Food Allergies*, advisors Dr. Pat Coyle-Rogers and Dr. Layna Himmelberg

CATHY LOWREY *Bullying in the Workplace: A Case Study of Nursing Unit Managers' Perspectives*, advisors Dr. Tammy Madsen and Carla Dirkschneider

SUSAN MIREMBE MATOVU *Comparison of Accuracy and Time Needed for Associate Degree Nursing Students Assessment of Standardized Patient Experiencing Anxiety*, advisor Dr. Mae Timmons

SARAH MATYA *Creating an Administrative Fellowship at Nebraska Medicine*, advisor Jennifer Mayotte

JUSTIN NISSEN *A Comparison of Opioids, Non-Opioids and Combination of Opioids and Non-Opioid Usage in the Treatment of Acute Migraine Headaches in Emergency Room Setting*, advisors Dr. Pat Coyle-Rogers and Dr. Aubray Orduña

HAYLEY PHILLIPS *Primary Care Clinical Registered Nurses' Actual and Perceived Knowledge of Diabetes Mellitus*, advisor Dr. Mae Timmons

SARAH RANSLEM *Knowledge Levels and Perceptions of Registered Nurses Regarding Nurse-Specific Patient Satisfaction Indicators*

Associated with Nurse-to-Nurse Bedside Reporting Processes, advisor Dr. Janet Henriksen

LACEY SNYDER *Perioperative Nurses' Perception of Crutch Teaching for Outpatient Knee Surgery Patients*, advisor Dr. Jane Langemeier

JAMIE STEENHOEK *What are Registered Nurses' Perceptions on the Use of Breastmilk in Breastfed Babies with Dehydration?*, advisor Dr. Renee Ruhkamp

REBECCA THOMPSON *Evaluation of Primary Care Providers' Assessment of Sleep Disorders at Annual Physicals*, advisor Dr. Martha Sanders

NATHAN VAN WINKLE *Evaluating the Cleanliness of Computers Used During*

Patient Care on a Transplant Unit, advisor Dr. Sue Haddock

TERESA WARD *Infant Pain Management: Knowledge and Perception of Pediatric Nurses in the Use of Oral Sucrose as a Comfort Measure for Painful Procedures*, advisor Dr. Renee Ruhkamp

HALEY WEILAND *Warfarin vs. Xarelto: The Treatment of Choice in Acute Deep Vein Thrombosis*, advisor Dr. Martha Sanders

MONICA WILCOX *Emphasizing Oral Assessments in Oncology*, advisor Dr. Layna Himmelberg

AFTON ZEDIKER *An Exploration of Parents' Opinions on the HPV Vaccine in a Medium-Sized South Dakota Clinic*, advisor Dr. Pam Holtz

Academic Honors

Academic honors are conferred on Bachelor of Science and Associate of Science degree candidates who, upon graduation, distinguish themselves by maintaining a high cumulative grade point average. To qualify for academic honors, a student must have completed the minimum required residency hours. Honors are distinguished as follows:

- **** Summa Cum Laude 3.85 and above
- *** Magna Cum Laude 3.75 through 3.84
- ** Cum Laude 3.65 through 3.74
- * With Distinction 3.50 through 3.64

Honor Societies

Honor societies at Clarkson College include:

- λ Member of Delta Chapter Lambda Nu National Honor Society for the Radiologic and Imaging Sciences
- † Member of Omicron Epsilon Chapter Sigma Theta Tau International Honor Society of Nursing
- Σ Member of National Society of Leadership and Success Sigma Alpha Pi Interdisciplinary Honor Society

Certificate in Imaging Informatics

Carlie A. Grieb
Taylor Michele Paulsen***
Kellanie Rochelle Salyer***

Associate of Science in Physical Therapist Assistant

Kipp Aaron Alesch
Sheena Marie Basnett****
Casey Albert Buresh****
Elisa Lynn Ellis
Lyla El-Refaie
Joseph Leighton Espinoza
Emily Gordon**
Erika Guzman
Nicholas Jochimsen
Peter James Kaijala
Madison A. Malzahn****
Erika Lynn Marron****
Steven Matthew Nelson****
Christina Ousley
Jessica Lylas Palu
David Michael Poots Σ***
Andrew Roy Rasmussen
Aubrey Kaye Taylor Σ****

Associate of Science in Radiologic Technology

Brennan Batien λ**
Kendra Lea Croghan λΣ****
Shelby Gansebom Σ
Hannah Henderson
Ashley Konfrst
Windy Neola Mitchell λ
Michelle M. Molgaard λ****
Mahriah Plugge λ*
Briana Polt λΣ****
Staci Rockwell λ****
Tiffany Kei Saxon
Ashley Marie Schaben λ****
Brett Temme
David Terry
Katelyn Trail
Christin Noel Williamsen

Associate of Science in Radiologic Technology & Bachelor of Science in Medical Imaging

Emily Banghart
Alyce Marie Grubbe λ
Brienne Kruger λ**
Meghan Meier λΣ
Taylor Michele Paulsen λ***

Ashlyn Marie Pudenz λ***
Clinton Joseph Reid λ*
Kellanie Rochelle Salyer λ***
Aubrey Scheibel Σ

Bachelor of Science in Medical Imaging

Carlie A. Grieb
Melissa Marie Winkler

Bachelor of Science in Health Care Business in Management

Kristin Lynn Parker Σ
Kathleen Riley
Stephanie Ann Sayles
Cody Woehl****

Bachelor of Science in Nursing

Carlie Anzalone*
Amber Meri Asselin
Ramona Paulyne Bartee
Victoria Kate Bierman*
Maryah Evan Graham Calkins
Stephanie Coats Σ*
Molly Forney Σ****
Jordyn Fuller
Megan Elizabeth Gabriel Σ
Megan Christine Jedlicka Σ*
Sarah Jezewski
Jordan Kendra Johnson
Madison LeeAnn Keysor****
Megan Elizabeth Madsen
Allison Martinez****
Courtney Rae Maxwell**
Kimberly Nicole Miller Σ
McKayla Olsen
Jessica Leigh O'Neill*
Bhavisha S. Patel**
Ana Repp Σ*
Michelle Margaret Riddle**
Lexis D. Rogers*
Megan Dawn Rowlett*
Jennifer Kay Scranton**
Anna Grace Skroch
Katrina Yovette Stanley
Natalie Stegall
Nicole Wallin †****
Monique C. Weathers
Taylor Wilson*
Elizabeth Rose Wulff

Master in Health Care Administration

Nancy Laughlin

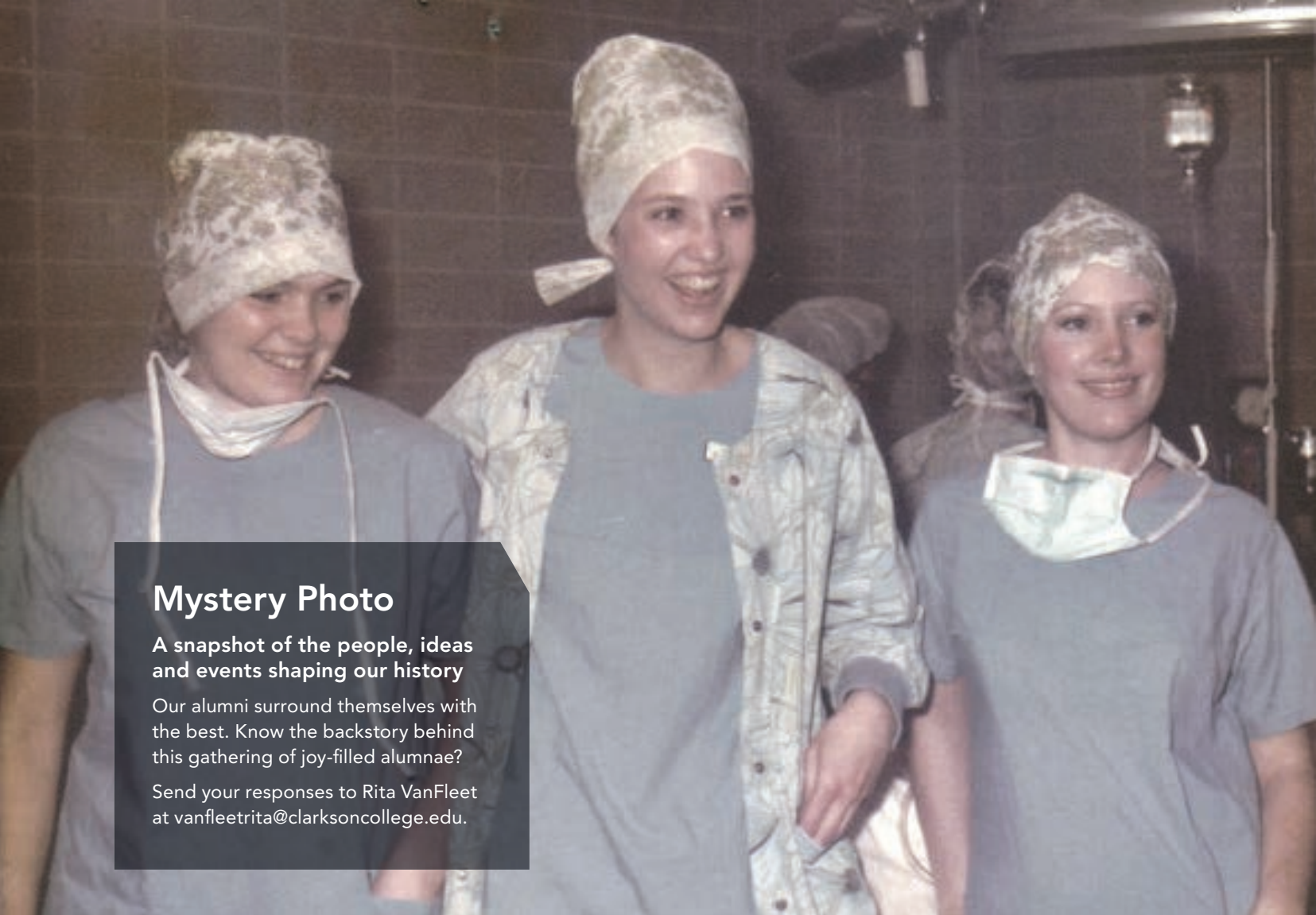
Sarah Elizabeth Matya Σ
Shannon M. Sorensen Σ

Master of Science in Nursing

Abbie Marie Albrecht
Venus Renee Anderson
Shauna Beckman
Amber D. Bowman Σ
Allison Bradshaw
Jessica Marie Crandall
Crystal Gayle Dailey
Jaclyn Marie Ecabert
Ashley Eisenschenk
Sharisse Marie Fiori
Aubrey Katherine Fraley
Tanelle Nicole Franko
Kari Lynn Goering
Jessica Anne Heitkamp
Blake T. Kadinger
Amy Jo Kastner †Σ
Tesa Marie Keeling
Alexandria L. Kohn
Bobbi J. Kreikemeier
Mary Lausten
Erin Rachel Leonard
Amy Michelle Levinger
Susan Mirembe Matoru
Justin Douglas Nissen
Hayley Christine Phillips
Jennah Melynn Ramsey
Sarah Elizabeth Ranslem
Ann Brook Rogers
Lacey Snyder
Jamie Lynn Steenhoek †
Rebecca Allen Thompson
Nathan L. Van Winkle
Teresa M. Ward
Danielle Paige Weaver
Haley Allison Weiland
Monica Ellen Wilcox
Afton Sue Zediker

Post-Master's Certificate in Nursing

CJ Bauman
Kristin Nichole Bradshaw
Melissa Gingrich
Chase Colby Luther
Sydnie Zoe Luther
John J. Patrick
Gina Renae Rahaman
Debra Jo Warren
Chao Zhang



Mystery Photo

A snapshot of the people, ideas and events shaping our history

Our alumni surround themselves with the best. Know the backstory behind this gathering of joy-filled alumnae?

Send your responses to Rita VanFleet at vanfleetrita@clarksoncollege.edu.



MYSTERY PHOTO REVEALED

Excellence Uncovered

The revealing of Dr. Patricia Book Perry's portrait in 1992 solidified her legacy of excellence as a nurse, educator and first president of Clarkson College.

Jean Voegel ('81, '84, '94)

I believe this portrait of Dr. Perry was created for one of two occasions: either her retirement or the move from the "old dorm" at 333 South 44th Street to the current building. She was amazing.

Ruth Muchemore ('53) and former faculty member

Wonderful portrait of Pat. I don't know the occasion.

MYSTERY PHOTO REVEALED: SPRING 2016 ISSUE

An unsolved mystery photo recently recaptured our attention thanks to the power of social media. The image was published in the spring 2016 Alumni Times and featured an alumna chatting with a young girl on graduation day. Sarah Geilenikirchen's aunt posted the image on Facebook and tagged Sarah and her mother, Joan Bolter ('92), who appeared in the picture. The special moment was serendipitous in nature, as Sarah is enrolled in nursing school and now has a daughter of her own.

College Service & Academic Departments Welcome New Leadership



1

Clarkson College strives to gather dedicated individuals who build upon one another's strengths and bring their best to the organization. Across campus this summer, new leadership was appointed to continue departmental success and take on new challenges.

DIRECTOR, GRADUATE NURSING **Dr. Layna Himmelberg**

Effective in July, Layna Himmelberg, Ed.D., M.S.N., C.N.E., assumed the role of Graduate Nursing Director at Clarkson College. Dr. Himmelberg joined the College in 2002 and served as an Associate Professor and Graduate Nursing Assistant Director prior to her new role.

As Graduate Nursing Director, Dr. Himmelberg works with master's degree-seeking students to prepare them for their roles as health care professionals. She oversees the program, works with faculty, advisors and students, and ensures the program adheres to strict accreditation standards.

"Although there are a lot of responsibilities to make sure the Graduate Nursing program is successful, I am up to the challenge," she said.

Dr. Himmelberg earned her Associate's degree from College of Saint Mary, a Bachelor's degree in Health Care Management from Bellevue University, a Bachelor's degree and a Master's degree in Nursing from Clarkson College, and a Doctorate of Education degree from College of Saint Mary. Her lifelong passion for nursing and learning inspires her to continue making a difference in the field.

"Nursing is a wonderful profession," Dr. Himmelberg said. "As an educator and nurse leader, I am able to assist and help students as they learn a new role within their graduate degree option."

REGISTRAR **Natalie Vrbka**

Early July, Clarkson College announced Natalie Vrbka was appointed the new Registrar. Vrbka formerly served as the Undergraduate Nursing Student Advisement Coordinator and boasts more than 17 years in higher education.

Vrbka joined the College in 2007 as Assistant to the Registrar and worked alongside Michele Stirtz for seven years. Stirtz served in the Registrar role for nearly 16 years before transitioning to Testing Center Representative earlier this year.



2

"One of my long-term goals was to become a registrar," Vrbka said. "The fact that I achieved that goal at Clarkson College is the best of both worlds because I love the community here."

Working alongside her two staff members, Vrbka's responsibilities include the creation, upkeep and security of student records, and the continued maintenance of academic integrity standards and College accreditation status. She plans to incorporate new policies and procedures to benefit current students and alumni.

One of her goals is to provide online transcripts within the next year, which are a fast, efficient solution compared to paper transcripts. The Registrar department is also making plans to implement an electronic storage system that will further ensure the safety of student records.

"Our goal is to always treat the students and their records with equality and accuracy," Vrbka said.

Dr. Pat Perry Academic Scholarly Project Recipients Announced

Seven faculty honored for achievements in higher education

The Dr. Patricia Book Perry Academic Scholarly Project Award honors faculty who make a substantial contribution to education at Clarkson College. The award involves the development and completion of a scholarly project that benefits academic programs, students and the College.

This year's recipients are Nancy McMahon and Patricia Weber—along with their colleagues Rebecca Allen, Joan Blum, Sarah Flanagan and Dr. Siti Arshad-Snyder—for their interprofessional education online module development project. Jennifer Memolo also received the award for the development and completion of her textbook, "Procedures and Patient Care for the Physical Therapy Assistant."

The team behind the online module development project set forth to create a program that focused on interprofessional communication and its importance for students and faculty.

"Research tells us that when students learn to communicate with different disciplines in the classroom, they have an advantage when practicing in the real world," Associate Nursing Professor Nancy McMahon said.

The team's first year goal is for all undergraduate, graduate and post-graduate students to utilize the module. The online module will facilitate open discussions and communication between students from different disciplines and education levels.

Award recipient and Physical Therapist Assistant (PTA) Instructor Jennifer Memolo has a Master's degree in English and is writing a textbook focused on the basic skills for PTA students.

"There are a lot of different fields that PTA students can choose," Memolo said. "They can work in a hospital, in an outpatient capacity or at a school, but these are skills that every PTA needs to know—no matter what area they choose."

The Dr. Patricia Book Perry Academic Scholarly Project Award honors Dr. Patricia Book Perry, the first President of Clarkson College. This award celebrates her commitment to providing high quality education.

"The award shows the confidence that Clarkson College has in its faculty," Memolo said. "It is an honor to be recognized for taking a risk and going above and beyond our duties."

Eligible applicants must be a full- or part-time faculty member currently teaching in a Clarkson College academic or professional development program for a minimum of three years. Along with their proposal outline and application, applicants must provide measurable objectives, benefits to the College, academic program or students, and an estimated time required to complete the project.



Prepare to be the **best**.

101 South 42 Street Omaha, NE 68131-2739

NEBRASKA MEDICINE | ADDRESS SERVICE REQUESTED

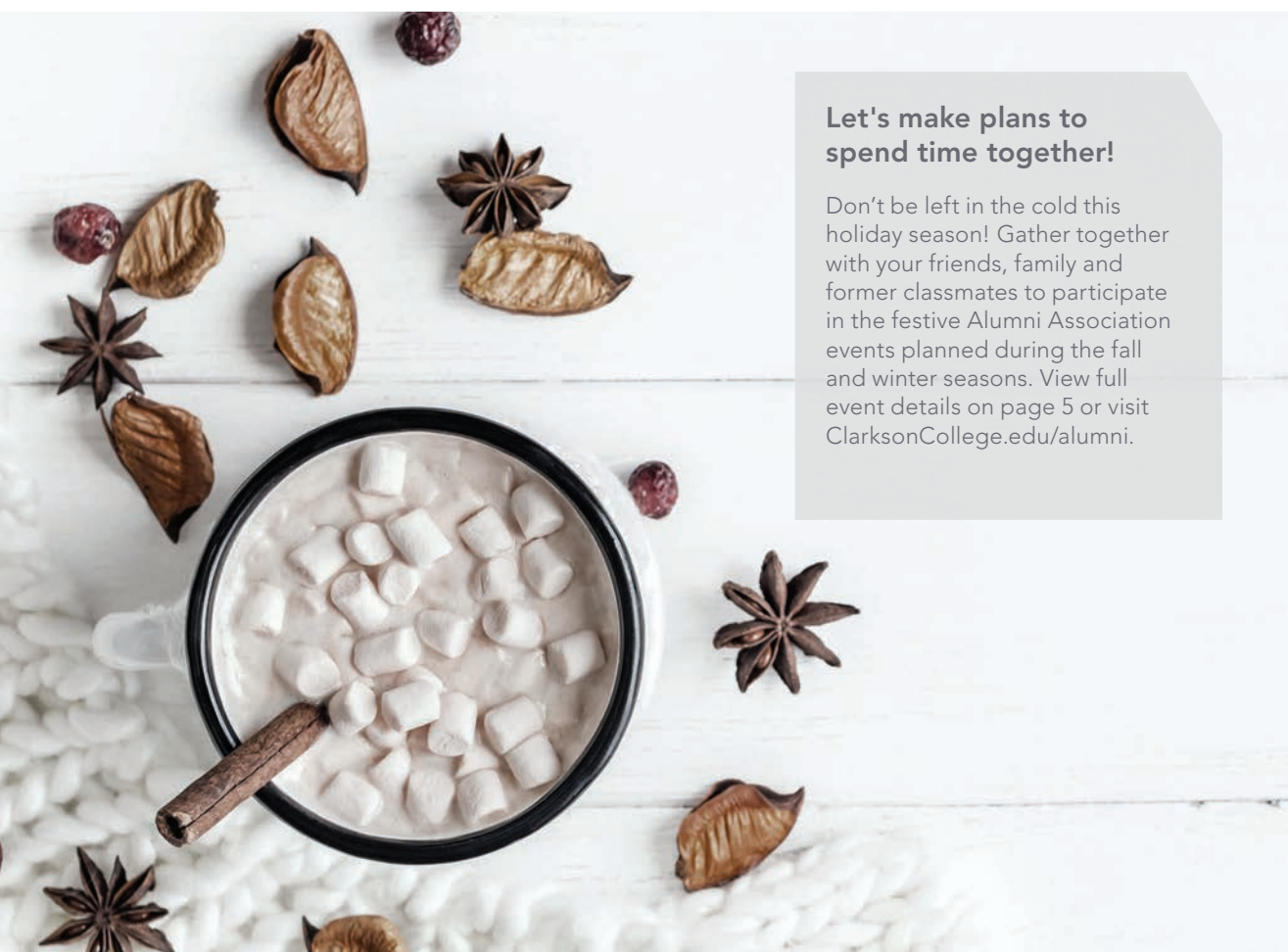
Non-Profit Org.

U.S. Postage

PAID

Omaha, NE

Permit No. 749



Let's make plans to spend time together!

Don't be left in the cold this holiday season! Gather together with your friends, family and former classmates to participate in the festive Alumni Association events planned during the fall and winter seasons. View full event details on page 5 or visit ClarksonCollege.edu/alumni.